

Gas Spring Accessories

Mounting Brackets

The range of Camloc gas springs is complimented by specially designed mounting brackets. Together, the extensive array creates a wide range of easy-to-assemble fixing options to suit your application.

The mounting brackets are manufactured in carbon steel with zinc and clear passivate, the components achieve a minimum of 72 hours of salt spray testing under ASTM B117.

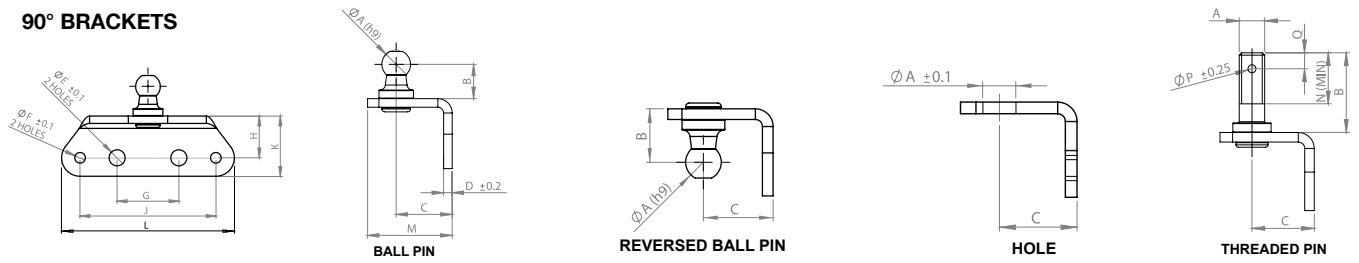
They are designed for ease of assembly with either ball pins or threaded pins to suit our wide range of end fittings. The brackets combine compact design with strength - offering an extensive force range capability.

Benefits

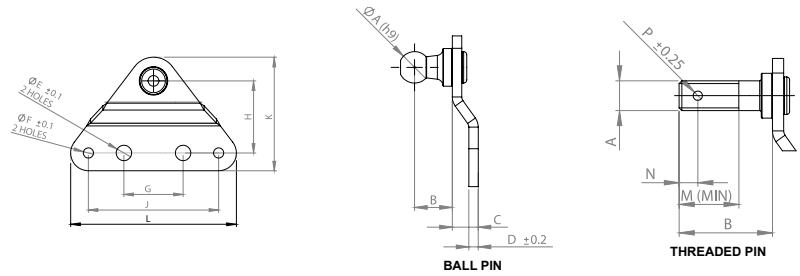
- Easy installation
- Maintenance free
- A wide range of flexible mounting options
- Salt spray tested under ASTM B117
- BS EN ISO 9001 Registered Company



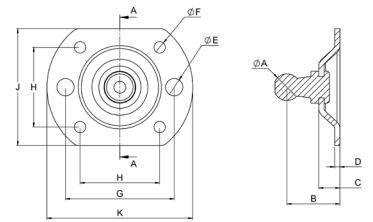
90° BRACKETS



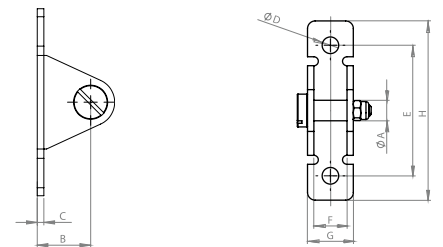
FLAT BRACKETS



RAISED BRACKETS



U BRACKETS



MOUNTING BRACKETS (All dimensions shown in mm are nominal)

Type	Part No.	Part Code	Alternative	Dim.																Compatible Camloc End Fittings
				A	B	C	D	E	F	G	H	J	K	L	M	N	P	Q		
90° Brackets	00-4263	KBN	Ball Pin	10	12	20	3	6.5	4.3	25	17	55	24.5	70	30	-	-	-	B8, P8, P9	
	00-4540	-	Reversed Ball Pin	10	15	20	3	6.5	4.3	25	17	55	24.5	70	30	-	-	-	B8, P8, P9	
	00-5213	-	Reversed Pin	6	7.8	15	3	7.2	-	18	12.3	-	18	30	25	-	-	-	F1	
	00-4265	KHN	Hole	8.5	-	20	3	6.5	4.3	25	17	55	24.5	70	30	-	-	-	B2, P5	
	00-4267	KPN	Threaded Pin	M8x1.25	25	20	3	6.5	4.3	25	17	55	24.5	70	30	16	2.5	5	E3, F2, F4, Z2, Z4	
Flat Brackets	00-4262	-	Ball Pin	10	12	8	3	6.5	4.3	25	30	55	47.5	70	-	-	-	-	B8, P8, P9	
	00-4696	-	Ball Pin	10	12	8	3	6.5	6.6	25	30	55	47.5	70	-	-	-	-	B8, P8, P9	
	00-4266	-	Threaded Pin	M8x1.25	25	8	3	6.5	4.3	25	30	55	47.5	70	16	5	2.5	-	E3, F2, F4, Z2, Z4	
Raised Brackets	00-4412	KBR	-	10	20	8	2	6.5	4.3	41	30	44	55	-	-	-	-	-	B8, P8, P9	
U Brackets	00-4643	-	-	8	20	2.5	6.5	51	13	18	70	-	-	-	-	-	-	-	E3, F2, F4, Z2, Z4	
	00-6526*	-	-	8	19	2.5	6	52	13	18	70	-	-	-	-	-	-	-	E3, J1, J2	

* Manufactured from 304 stainless steel

Camloc Motion Control Ltd
 15 New Star Road, Leicester, LE4 9JD, UK
 Tel: +44 (0)116 274 3600 Fax: +44 (0)116 274 3620
 E-mail: info@camloc.com Website: www.camloc.com

Camloc
 Gas Springs

